



Certificate of Analysis

Powered by Confident Cannabis
1 of 5

CANVAS

North Wellness

Sample: 2011CVS1701.5148

Vancouver, BC V5Y1K6

Strain: Full Spec CBD

Batch#: ; Batch Size: g

Sample Received: 11/18/2020; Report Created: 11/25/2020; Expires: 12/24/2020

Lic. #

Full Spec CBD

Concentrates & Extracts, Full Extract Cannabis Oil



Safety

Pass Pesticides	- Microbials	- Mycotoxins
Completed Solvents	Pass Metals	- Foreign Matter

Cannabinoids

0.75% Δ9 THC	2.19% Total THC + Δ8	60.07% Total CBD	NT Moisture
-----------------	-------------------------	---------------------	----------------

Analyte	LOQ	Mass	Mass
	%	%	mg/g
CBDV	0.01	35.32	353.2
THCa	0.01	NR	NR
Δ9-THC	0.01	0.75	7.5
Δ8-THC	0.01	ND	ND
THCV	0.01	1.44	14.4
CBDa	0.01	NR	NR
CBD	0.01	60.07	600.7
CBN	0.01	ND	ND
CBG	0.01	2.01	20.1
CBC	0.01	ND	ND
Total		99.59	995.9

Terpenes

--	--	--

Total THC = THCa * 0.877 + d9-THC + THCV
 Total CBD = CBDa * 0.877 + CBD
 LOQ = Limit of Quantitation; The reported result is based on a sample weight with the applicable moisture content for that sample; Unless otherwise stated all quality control samples performed within specifications established by the Laboratory. Cannabinoid quantification by Gas chromatography-flame ionization detection and Capillary column technique with a limit of detection of 0.03%. Procedure reference Analytica Chimica Acta Volume 468, Issue 2, 18 September 2002, Pages 245-254, Ph.I 1.14.5



CANVAS

#2D 138 West 6th
 Vancouver, BC
 (604) 449-8505
<http://www.canvaslabs.ca>
 Lic# LIC-EJBWETMPIL-2019

Confident Cannabis
 All Rights Reserved
support@confidentcannabis.com
 (866) 506-5866
www.confidentcannabis.com





Certificate of Analysis

Powered by Confident Cannabis
2 of 5

CANVAS

North Wellness

Sample: 2011CVS1701.5148

Vancouver, BC V5Y1K6

Strain: Full Spec CBD

Batch#: ; Batch Size: g

Sample Received: 11/18/2020; Report Created: 11/25/2020; Expires: 12/24/2020

Lic. #

Full Spec CBD

Concentrates & Extracts, Full Extract Cannabis Oil



Microbials

-

Analyte	Limit	Mass	Status
---------	-------	------	--------

Heavy Metals

Pass

Analyte	LOQ PPM	Limit PPM	Mass PPM	Status
Arsenic			NR	NT
Cadmium			NR	NT
Cobalt			NR	NT
Copper			NR	NT
Lead			NR	NT
Manganese			NR	NT
Mercury			NR	NT
Nickel			NR	NT
Zinc			NR	NT

Residual Solvents

Completed

Analyte	LOQ PPM	Limit PPM	Mass PPM	Status
Acetone	1.000	5000.000	NR	NT
Ethanol	1.000	5000.000	NR	NT
Heptane	1.000	5000.000	NR	NT
Isobutane	1.000	5000.000	NR	NT
Isopropanol	1.000	5000.000	NR	NT
n-Butane	1.000	5000.000	NR	NT
n-Hexane	1.000	5000.000	NR	NT
n-Pentane	1.000	5000.000	NR	NT

LOQ = Limit of Quantitation; The reported result is based on a sample weight with the applicable moisture content for that sample; Unless otherwise stated all quality control samples performed within specifications established by the Laboratory. Heavy metal screening method by reagent colorimetric test strips for arsenic, cadmium, cobalt, copper, lead, manganese, mercury, nickel and zinc with a detection limit of 0.2-5 ppm. Procedure reference AOAC Method 2013.06; U.S.P

LOQ = Limit of Quantitation; The reported result is based on a sample weight with the applicable moisture content for that sample; Unless otherwise stated all quality control samples performed within specifications established by the Laboratory. Residual Solvents determination method by gas chromatographic headspace analysis, with a detection limit of 1-10 ppm. Procedure reference AOAC Method 2019.002; U.S.P



CANVAS

#2D 138 West 6th
Vancouver, BC
(604) 449-8505
<http://www.canvaslabs.ca>
Lic# LIC-EJBWETMPIL-2019

Confident Cannabis
All Rights Reserved
support@confidentcannabis.com
(866) 506-5866
www.confidentcannabis.com





Certificate of Analysis

Powered by Confident Cannabis
3 of 5

CANVAS

North Wellness

Sample: 2011CVS1701.5148

Vancouver, BC V5Y1K6

Strain: Full Spec CBD

Batch#: ; Batch Size: g

Sample Received: 11/18/2020; Report Created: 11/25/2020; Expires: 12/24/2020

Lic. #

Full Spec CBD

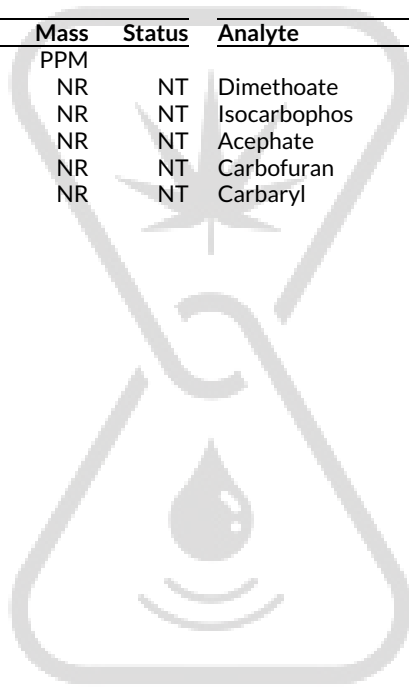
Concentrates & Extracts, Full Extract Cannabis Oil



Pesticides

Pass

Analyte	LOQ	Limit	Mass	Status	Analyte	LOQ	Limit	Mass	Status
	PPM	PPM	PPM			PPM	PPM	PPM	
Methamidophos	1.700		NR	NT	Dimethoate	1.300		NR	NT
Parathion Ethyl	1.700		NR	NT	Isocarbophos	3.100		NR	NT
Dichlorvos	0.300		NR	NT	Acephate	3.500		NR	NT
Malathion	2.000		NR	NT	Carbofuran	0.500		NR	NT
Monocrotophos	2.500		NR	NT	Carbaryl	2.500		NR	NT



CANVAS

LOQ = Limit of Quantitation; The reported result is based on a sample weight with the applicable moisture content for that sample; Unless otherwise stated all quality control samples performed within specifications established by the Laboratory. Screened for acephate, carbaryl, carbofuran, carbosulfan, dichlorvos, dimethoate, dipterex, isocarbophos, malathion, methamidophos, monocrotophos, and parathion residues.



CANVAS

#2D 138 West 6th
Vancouver, BC
(604) 449-8505
<http://www.canvaslabs.ca>
Lic# LIC-EJBWETMPIL-2019

Confident Cannabis
All Rights Reserved
support@confidentcannabis.com
(866) 506-5866
www.confidentcannabis.com





CANVAS

Certificate of Analysis

Powered by Confident Cannabis
4 of 5

North Wellness

Vancouver, BC V5Y1K6

Lic. #

Sample: 2011CVS1701.5148

Strain: Full Spec CBD

Batch#: ; Batch Size: g

Sample Received: 11/18/2020; Report Created: 11/25/2020; Expires: 12/24/2020

Full Spec CBD

Concentrates & Extracts, Full Extract Cannabis Oil



Pesticides

Pass

Analyte	LOQ	Limit	Mass	Status	Analyte	LOQ	Limit	Mass	Status
---------	-----	-------	------	--------	---------	-----	-------	------	--------



CANVAS

LOQ = Limit of Quantitation; The reported result is based on a sample weight with the applicable moisture content for that sample; Unless otherwise stated all quality control samples performed within specifications established by the Laboratory. Screened for acephate, carbaryl, carbofuran, carbosulfan, dichlorvos, dimethoate, dipterex, isocarbophos, malathion, methamidophos, monocrotophos, and parathion residues.



CANVAS

#2D 138 West 6th
Vancouver, BC
(604) 449-8505
<http://www.canvaslabs.ca>
Lic# LIC-EJBWETMPIL-2019

Confident Cannabis
All Rights Reserved
support@confidentcannabis.com
(866) 506-5866
www.confidentcannabis.com





Certificate of Analysis

Powered by Confident Cannabis
5 of 5

CANVAS

North Wellness

Sample: 2011CVS1701.5148

Vancouver, BC V5Y1K6

Strain: Full Spec CBD

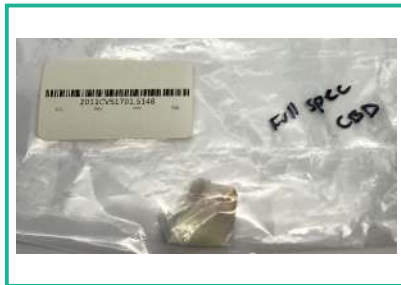
Batch#: ; Batch Size: g

Sample Received: 11/18/2020; Report Created: 11/25/2020; Expires: 12/24/2020

Lic. #

Full Spec CBD

Concentrates & Extracts, Full Extract Cannabis Oil



0.75%

Δ9 THC

2.19%

Total THC + Δ8

60.07%

Total CBD

99.59%

Total
Cannabinoids

Cannabinoids

Complete

Analyte	LOQ	Mass	Mass
	%	%	mg/g
CBDV	0.01	35.32	353.2
THCa	0.01	NR	NR
Δ9-THC	0.01	0.75	7.5
Δ8-THC	0.01	ND	ND
THCV	0.01	1.44	14.4
CBDa	0.01	NR	NR
CBD	0.01	60.07	600.7
CBN	0.01	ND	ND
CBG	0.01	2.01	20.1
CBC	0.01	ND	ND
Total		99.59	995.9

Total THC = THCa * 0.877 + d9-THC +THCV
Total CBD = CBDa * 0.877 + CBD

LOQ = Limit of Quantitation; The reported result is based on a sample weight with the applicable moisture content for that sample; Unless otherwise stated all quality control samples performed within specifications established by the Laboratory. Cannabinoid quantification by Gas chromatography-flame ionization detection and Capillary column technique with a limit of detection of 0.03%. Procedure reference Analytica Chimica Acta Volume 468, Issue 2, 18 September 2002, Pages 245-254, Ph.I 1.14.5



CANVAS

#2D 138 West 6th
Vancouver, BC
(604) 449-8505
<http://www.canvaslabs.ca>
Lic# LIC-EJBWETMPIL-2019

Confident Cannabis
All Rights Reserved
support@confidentcannabis.com
(866) 506-5866
www.confidentcannabis.com

